

Semi-detached house for Sale in Barberino Tavarnelle

€ 890.000

Ref. CBI162-2999-578



265 sq.m | Bathrooms: 5 | Bedrooms: 5 | Rooms: 11

A Tuscan Classic in a Modern Version

In one of the most pleasant and authentic areas of Florentine Chianti, this semi-detached house combines the charm of Tuscan tradition with contemporary comforts designed for everyday living.

The structure retains the typical country house feel, with warm materials and a welcoming atmosphere, while recent renovations have introduced modern touches and high energy efficiency, ideal for those seeking a sustainable, high-performance, and energy-efficient home.

The interiors are bright and well-organized, enhanced by large terraces that become a natural extension of the living area: perfect spaces for outdoor breakfasts, moments of relaxation, or summer dinners overlooking the greenery.

Outside, a well-kept garden and additional open spaces offer the opportunity to fully enjoy the outdoors: a play area, vegetable garden, lounge area, and solarium, all nestled in a peaceful and pleasant setting.

The location is convenient and well-connected, with public parking just steps away—a rare find in the countryside. The Noce area guarantees privacy and tranquility, while still being close to the amenities of Barberino Tavarnelle and the main routes to Florence and Siena.

An ideal solution for those seeking authenticity, modern comfort, and quality of life, in a genuine and harmonious Tuscan setting.



The house, in excellent condition, is spread over two floors and consists of a large living area on the ground floor, with a welcoming lounge, an eat-in kitchen and a bathroom as well as a convenient laundry room.
On the same floor, a mini apartment has been created consisting of an entrance/living room/kitchen with a bedroom and a bathroom as well as an additional room that could be used as a study.
On the first floor we find the sleeping area, with four spacious and bright bedrooms and three bathrooms.
In the attic there is a study and a bathroom/laundry room.
The total floor area of the house is 265 square meters, of which 239 are walkable.
The interiors are in excellent condition and characterised by a welcoming atmosphere with attention to the smallest details.
The house is equipped with an independent heating system with radiators and radiant panels, powered by methane, to ensure maximum comfort and significant energy savings.
Furthermore, there is an alarm system to ensure the safety of the inhabitants.
The property also includes a large terrace, a covered space ideal for summer dining and relaxing al fresco, and a pleasant private garden perfect for spending pleasant days outdoors.
In short, this semi-detached house in Barberino Tavarnelle is an ideal solution for those seeking a spacious, well-maintained residence in a strategic location.

Contact us for more information and to arrange a visit.

Property Informations

Address: Via di Noce

Zip Code: 50028

Bedrooms: 5

Bathrooms: 5

Rooms: 11

Internal condition: Excellent

---> **data_operazione** <---: 0000-00-00

---> **esclusiva** <---: 1

: 1186.30

: 0000-00-00

Floor: Ground Floor

Total floors: 2

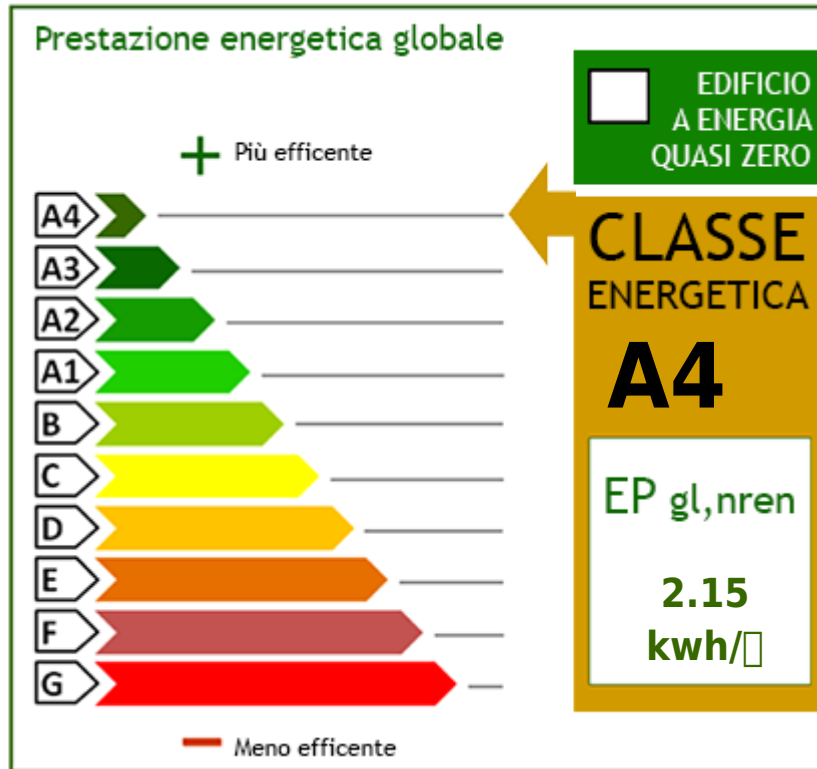
Current Status: Available after the deed of sale

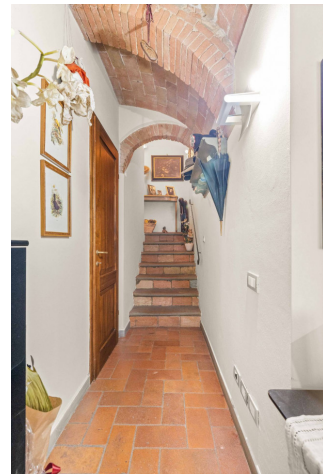
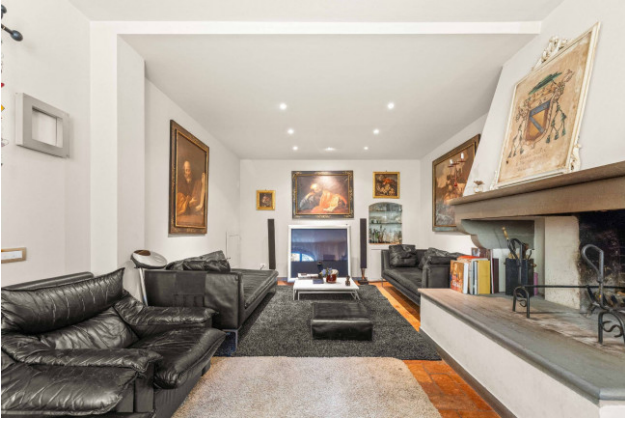
Terrace: Present

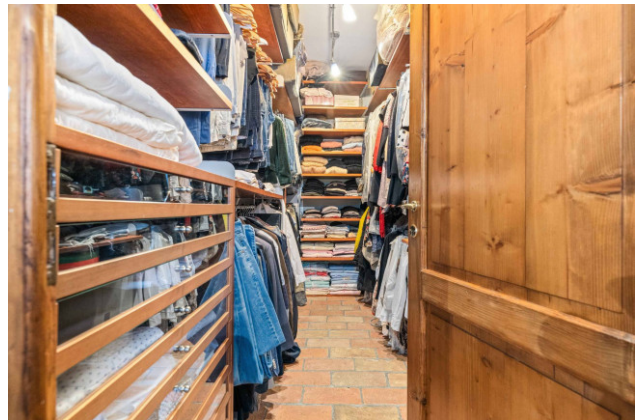
Garden: Private

Kitchen: Eat-in kitchen

Garage: for one car, 19 sq.m









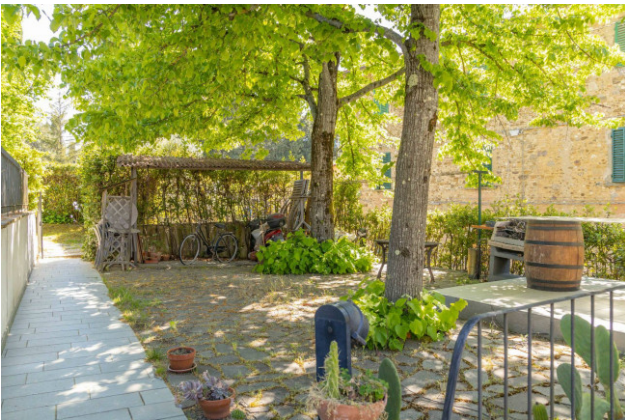
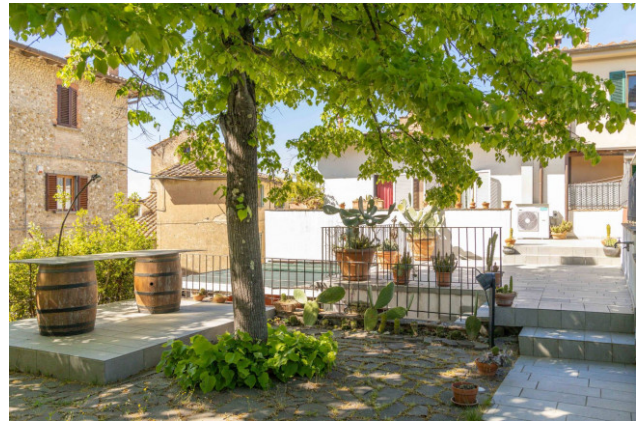
24RE

Via della Vigna Nuova, 16 - Firenze (FI) - Phone number +393496007599
24refirenze@cbitaly.it - <https://www.coldwellbankerluxury.it/en>
VAT 04954530962



24RE

Via della Vigna Nuova, 16 - Firenze (FI) - Phone number +393496007599
24refirenze@cbitaly.it - <https://www.coldwellbankerluxury.it/en>
VAT 04954530962



24RE

Via della Vigna Nuova, 16 - Firenze (FI) - Phone number +393496007599
24refirenze@cbitaly.it - <https://www.coldwellbankerluxury.it/en>
VAT 04954530962





24RE

Via della Vigna Nuova, 16 - Firenze (FI) - Phone number +393496007599
24refirenze@cbitaly.it - <https://www.coldwellbankerluxury.it/en>
VAT 04954530962