



Historical villa: for Sale in Firenze

€ 6.000.000

Ref. CBI100-143-290816



2.100 sq.m | Bathrooms: 20 | Bedrooms: 14 | Rooms: 40

Prestigious Tuscan Villa on the outskirts of Florence in Fiesole.

A typical Tuscan villa located on the hills overlooking the city of Florence, immersed in the tranquility and protected by a context of absolute privacy.

The villa originates from a 16th-century castle, built incorporating a 13th-century tower, an element that gives the property a rare historical charm and great architectural value.

The property is made up of several buildings for a total impressive surface area:

Main villa with rooms mainly intended for residential use for approximately 1,450 m2. Characteristic are the Cloister and the Loggia from which the entrance to two independent apartments. Ground Floor of the Villa: reception room with entrance from the terrace, large room formerly the lemon house with fireplace of over 140 m2, kitchens of over 70 m2. Main Floor: with lounges, Ground Floor and Main Floor were used for conferences, tourism and ceremonies. Second Floor: less prestigious rooms with kitchen and bathrooms and apartment with entrance from the Cloister of approximately 120 m2 with attics (now used as storage). Third Floor: Terrace overlooking Florence of approximately 160 m2. attics. Furthermore, apartment of over 120 m2 with entrance from the Cloister and the Loggia (now used as storage). Third Floor: Windowed attics. Cellars. Farmhouse with independent entrance on two levels, with prestigious outdoor spaces overlooking Florence. Property of approximately 330 m2 with annexes used as warehouse, cellar and storage for approximately 350 m2. Land and woods: for over 250,000 m2. Main Features

Panoramic: Trail sections with high panoramic views that offer exceptionally visible vantage points, ideal for enjoying the beauty of the Tuscan landscape and Florence.

History and Architecture:



Originating in the 16th century, the property boasts a 13th-century tower that lends it a rare historical charm. Careful renovation in the 1990s preserved the property's authenticity: original ceilings, floors, windows, and doors. Privacy
Surrounded by nature, it offers absolute privacy and ample outdoor space. Strategic location.

Just 15 minutes from the centre of Florence and a few minutes from Fiesole, with convenient connections. Possibility of Use

Private Residence: An exclusive retreat for families. Tourism and Conference Activities: Excellent as a farmhouse or bed & breakfast, conferences and events, thanks to its location and historic charm. Activities and Attractions in the Area

Culture: Proximity to Florence and Fiesole, with museums, galleries, and high-quality restaurants. Nature: Opportunities for hiking and outdoor activities in the surrounding hills.

Property Informations

Address: Via Salviatei

Zip Code: 50133

Bedrooms: 14

Bathrooms: 20

Rooms: 40

Internal condition: To be renovated

---> **data_operazione** <---: 0000-00-00

---> **esclusiva** <---: 1

: 0000-00-00

Floor: Multilevel

Total floors: 4

Date of construction: 1500

Current Status: Available after the deed of sale

Balconies: Present

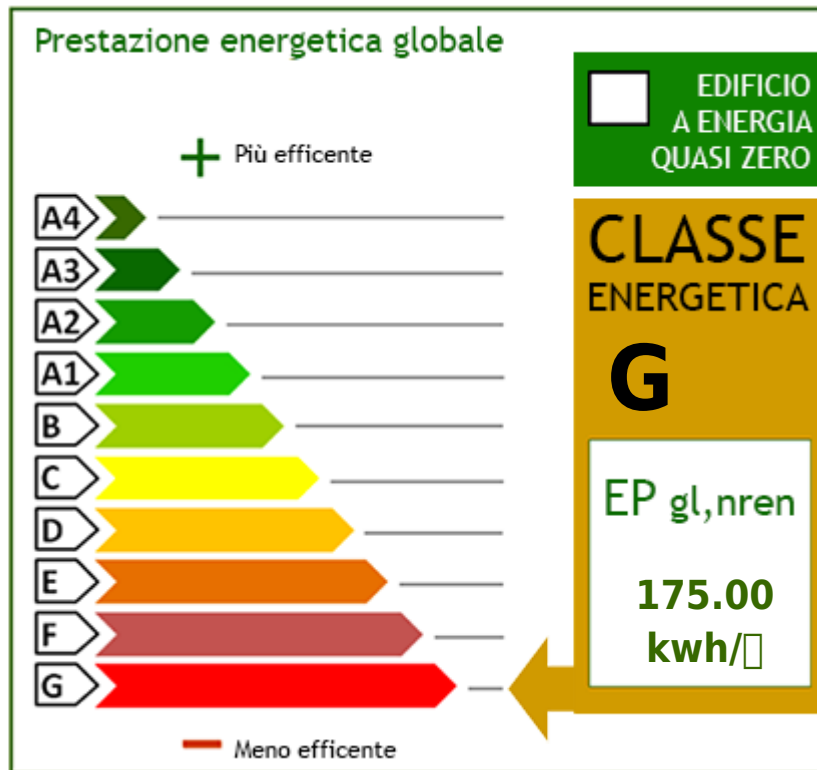
Terrace: Present

Garden: Private

Kitchen: Eat-in kitchen

Garage: Shed

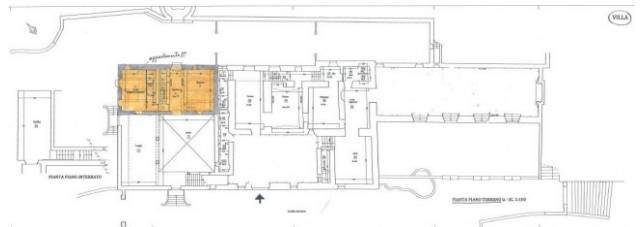
: Yes

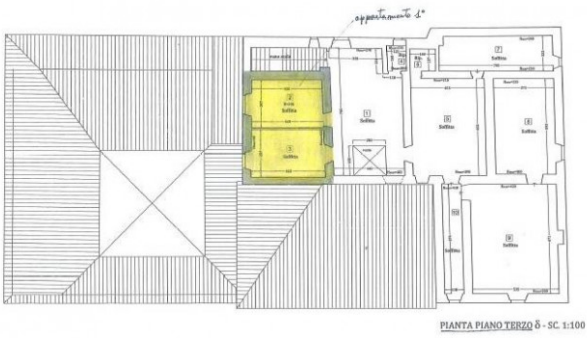
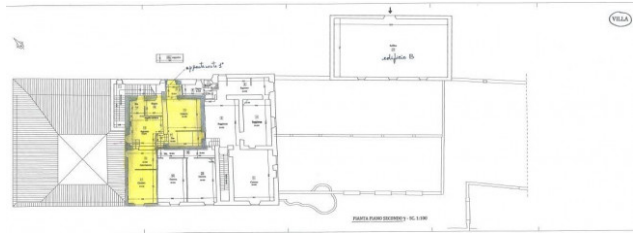
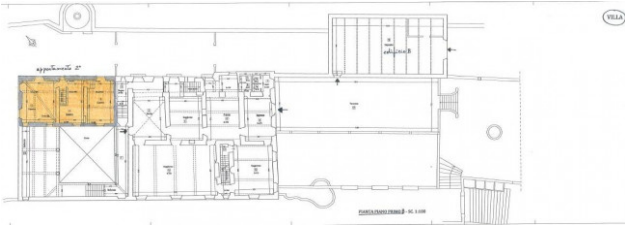




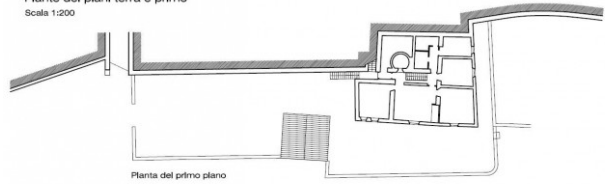




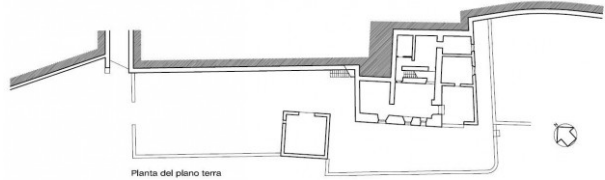




Casa colonica Fiano
 Pianta del piano terra e primo
 Scala 1:200



Pianta del primo piano



Pianta del piano terra

