



# Castle for Sale in Reggello San Clemente Confidential Negotiation Ref. CBI162-2768-448



**2.450 sq.m | Bathrooms: 15 | Bedrooms: 16 | Rooms: 53**

On the gentle hills surrounding **San Clemente**, a charming hamlet in the municipality of **Reggello**, proudly stands the **Castle of Torre a Monte**, an authentic historic residence built around **1427** by the noble **Cavalcanti family**.

The **Reggello** area, nestled on the slopes of **Mount Pratomagno** and overlooking the **Upper Arno Valley**, is a land of extraordinary natural and cultural beauty. Here, **centuries-old olive groves**, **chestnut forests**, and **medieval villages** alternate, dotted with Romanesque parish churches and ancient noble villas. The landscape preserves the unspoiled charm of rural Tuscany, where agricultural tradition-especially the production of **DOP-certified extra virgin olive oil of exceptional quality**-intertwines with a millennia-old history dating back to Etruscan and Roman times.

In this evocative setting, the Castle of Torre a Monte dominates the valley with its graceful grandeur. Surrounded by ancient, tranquil nature, it is adorned with a magnificent **Italian-style garden**, created around **1860** by **Baron Adolfo Levi**, the then-owner and the visionary behind its refined restoration and expansion. He is credited with the **finely decorated coffered ceilings**, the **frescoed halls**, and the revival of the castle's original structure, harmoniously blending architectural rigor with nineteenth-century romanticism. Today, the Castle-enhanced by **spacious green areas**, a **pool set within the heart of the garden**, and **artful nighttime lighting** that highlights its contours and towers-welcomes guests into an atmosphere of **timeless elegance and serenity**.

It is the **perfect setting for weddings, receptions, and exclusive events**, a place where **history, art, and nature** merge in perfect harmony, offering visitors an **authentically Tuscan experience**



## Certification

Energy Class: G

## Property Informations

**Address:** Via di Torre a Monte

**Bedrooms:** 16

**Bathrooms:** 15

**Rooms:** 53

**Internal condition:** Good

**---> data\_operazione <---:** 0000-00-00

: 0000-00-00

**Total floors:** 3

**Current Status:** Available after the deed of sale

**Terrace:** Present



**24RE**

Via della Vigna Nuova, 16 - Firenze (FI) - Phone number +393496007599  
24refirenze@cbitaly.it - <https://www.coldwellbankerluxury.it/en>  
VAT 04954530962



24RE

Via della Vigna Nuova, 16 - Firenze (FI) - Phone number +393496007599  
24refirenze@cbitaly.it - <https://www.coldwellbankerluxury.it/en>  
VAT 04954530962





24RE

Via della Vigna Nuova, 16 - Firenze (FI) - Phone number +393496007599  
24refirenze@cbitaly.it - <https://www.coldwellbankerluxury.it/en>  
VAT 04954530962



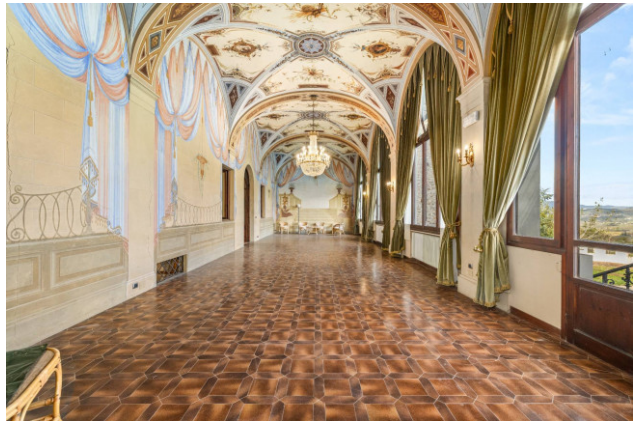
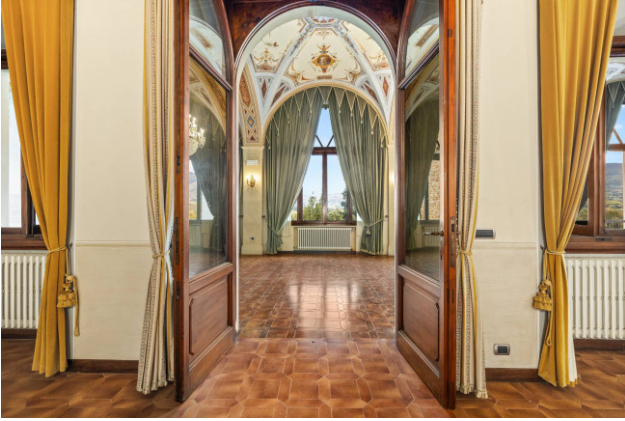
24RE

Via della Vigna Nuova, 16 - Firenze (FI) - Phone number +393496007599  
24refirenze@cbitaly.it - <https://www.coldwellbankerluxury.it/en>  
VAT 04954530962



24RE

Via della Vigna Nuova, 16 - Firenze (FI) - Phone number +393496007599  
24refirenze@cbitaly.it - <https://www.coldwellbankerluxury.it/en>  
VAT 04954530962



24RE

Via della Vigna Nuova, 16 - Firenze (FI) - Phone number +393496007599  
24refirenze@cbitaly.it - <https://www.coldwellbankerluxury.it/en>  
VAT 04954530962



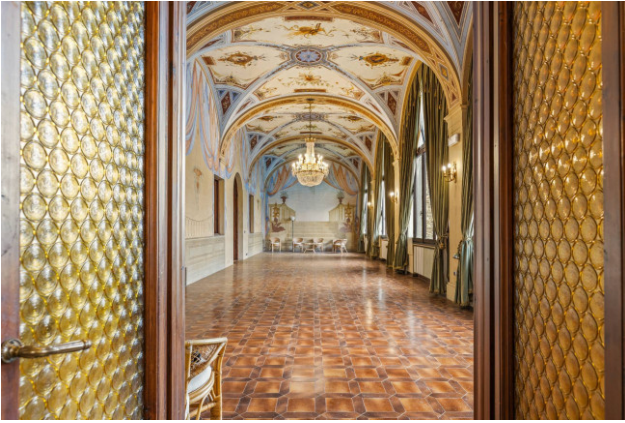
**24RE**

Via della Vigna Nuova, 16 - Firenze (FI) - Phone number +393496007599  
24refirenze@cbitaly.it - <https://www.coldwellbankerluxury.it/en>  
VAT 04954530962



24RE

Via della Vigna Nuova, 16 - Firenze (FI) - Phone number +393496007599  
24refirenze@cbitaly.it - <https://www.coldwellbankerluxury.it/en>  
VAT 04954530962





24RE

Via della Vigna Nuova, 16 - Firenze (FI) - Phone number +393496007599  
24refirenze@cbitaly.it - <https://www.coldwellbankerluxury.it/en>  
VAT 04954530962



**24RE**

Via della Vigna Nuova, 16 - Firenze (FI) - Phone number +393496007599  
24refirenze@cbitaly.it - <https://www.coldwellbankerluxury.it/en>  
VAT 04954530962