



## 4 or more Rooms for Rent in Milano Centro Storico

€ 5.000

Ref. CBI130-1613-1169434



**131 sq.m | Bathrooms: 2 | Bedrooms: 2 | Rooms: 4**

Minimum 3-month rental: charm and design in the heart of Milan.

In Milan, Via Santa Maria Fulcorina 17, in the seventeenth-century Palazzo Alari Visconti, with concierge service, apartment, completely renovated in 2023, for rental on the second and third floor, with independent heating and air conditioning, overlooking two internal courtyards but very bright and quiet, despite being in the middle of the city.

The landing is accessed both through the monumental staircase and by the elevator.

Arranged on two levels, connected by an internal staircase, it consists of:

on the lower level, entrance hall, double-height living room with dining corner and fireplace, kitchen, laundry (with washer-dryer, sink and independent boiler), double bedroom with walk-in closet and bathroom ensuite with shower;

on the upper level, studio (or second living room) overlooking the living room, double bedroom, hallway with closets and second bathroom.

Fully equipped with original and well-known "design" pieces.

It is rented only with transitional contracts (minimum 12 months, maximum 18 months possibly renewable).

A security deposit equal to three months and a bank guarantee equal to an annuity of the rental are required.

The rent is 5.000,00 Euros + 10% VAT.



Palazzo Alari Visconti, although built in the '500 (the oldest Renaissance nucleus, overlooking Via Borromei 4-6), took on its present character in the eighteenth century, when, between the seventeenth and eighteenth centuries, different buildings were combined and made homogenous.

The reconstruction of the facade (built around 1775) is the work of Carlo Felice Soavi (Lugano, 8 October 1749 - Milan, 29 April 1803) while the restoration is by Achille Castiglioni.

It currently has three floors and seven openings on the left side and two floors and seven openings on the right side.

The neoclassical façade is characterized by a sober, essential and rigorous decorative plan with an elegant round portal and, on the first floor, sandstone windows with overlapping curved and triangular gables, supported by "corbelled" bodies on small masks; on the second floor, French windows, always with sandstone contour and balconies, with straight parapets little protruding, brought by scroll shelves, regent festoons in full relief, detached from the bottom.

The façade is crowned by a plastic eaves cornice.

The courtyard has three porch wings, two with architraved Tuscan columns and wooden coffered ceiling and one with lowered arches and a sail vault on pillars.

From the left side of the courtyard we access, through a seventeenth-century monumental staircase with stone balustrade, as well as the apartment, the main floor where some rooms with vaulted ceilings with rich decorations are preserved.

## Property Informations

**Address:** Via Santa Maria Fulcorina, 17

**Zip Code:** 20121

**Bedrooms:** 2

**Bathrooms:** 2

**Rooms:** 4

**Internal condition:** Excellent

---> **data\_operazione** <---: 0000-00-00

---> **esclusiva** <---: 1

: 0000-00-00

**Floor:** 3

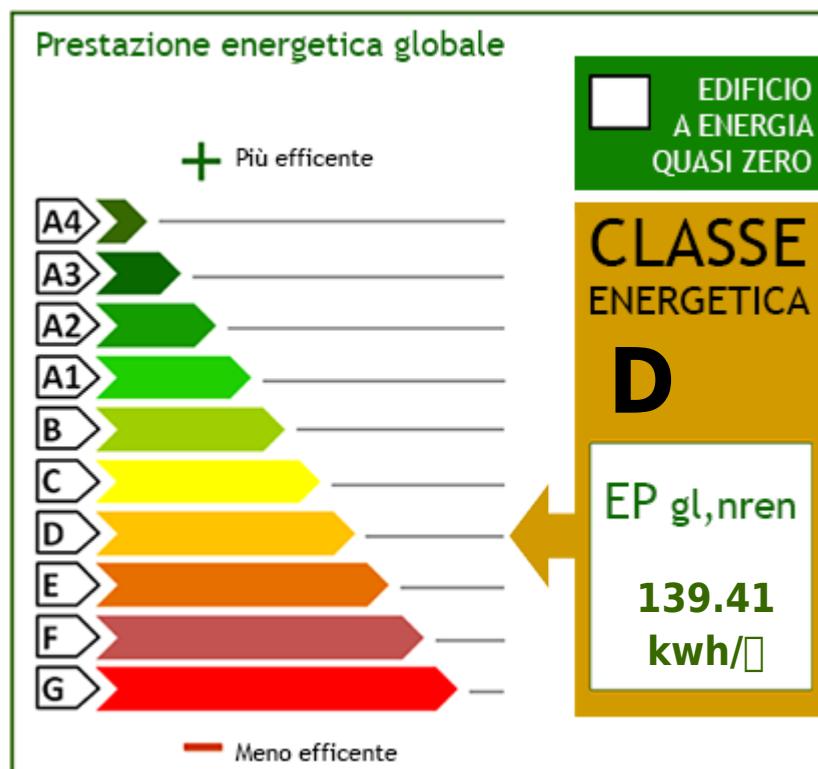
**Total floors:** 3

**Lift:** Yes

**Date of construction:** 1600

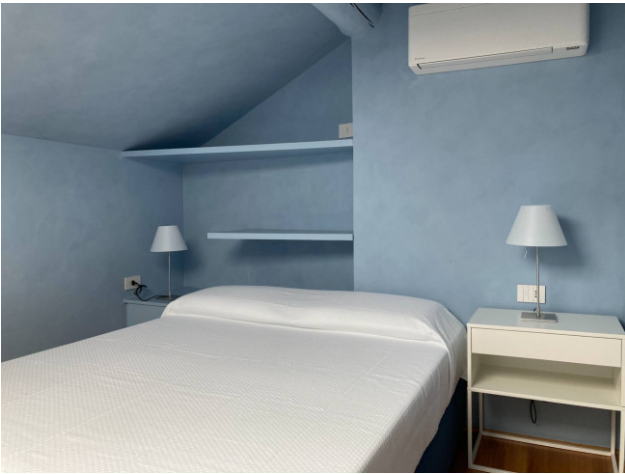
**Condominium costs:** € 208

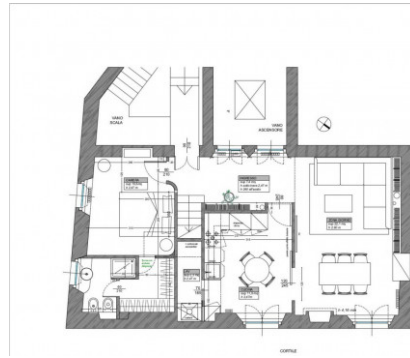
**Kitchen:** Eat-in kitchen





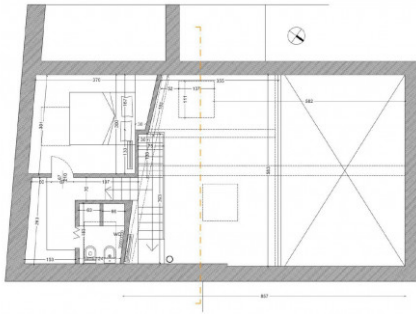






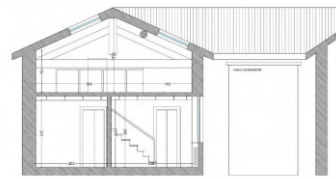
PIANO INFERIORE

Ingresso, soggiorno e sala da pranzo, cucina abitabile con lavanderia (lavastoviglie, lavello, caldaia autonoma), camera da letto matrimoniale, cabina-armadio, bagno con doccia.



PIANO SUPERIORE

Soggiorno-studio, camera matrimoniale, corridoio con guardaroba, secondo bagno.



Appartamento al terzo piano con eccelsore, riscaldamento autonomo, aria condizionata.

Disposto su due piani con scala interna.

Affacciato su due cortili aperti, quindi luminoso ma silenziosissimo anche se siamo in pieno centro.

Con servizio di portineria.

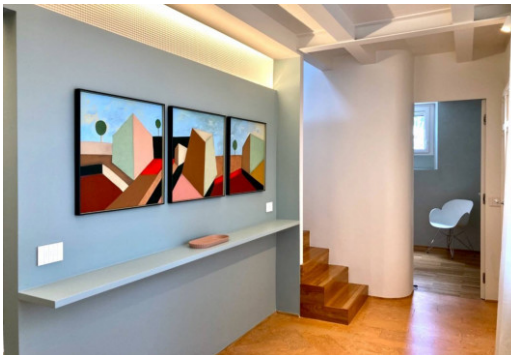


Via Santa Maria Fulconia 17  
Palazzo Alari Visconti,  
costruito nel 1600.

Tutte le foto di questa  
presentazione sono state  
scattate con un normale  
telefono cellulare.  
In nessuna è stato usato il  
grandangolo.



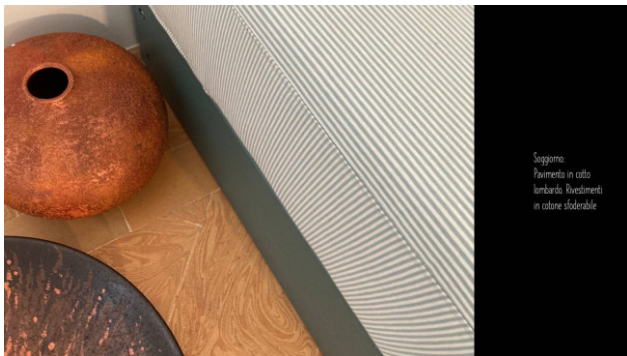
Ingresso verso il  
soggiorno.  
Quadro: Felice,  
Massimo Volontè, Olio  
su tavola.



Ingresso verso la  
camera padronale.



Soggiorno:  
divani De Padova  
originali.  
Lampada fontana Pate,  
tappeto Klimt Afghan  
Old Style.



Soggiorno.  
Pavimento in cotto  
lombardo. Rivestimenti  
in cotone sloderabile



Sala da pranzo: camino  
originale '700 in  
marmo. Tavolo Tulip,  
sedie Philippe Stark  
Drade, lampade  
Castiglioni, tende in  
lino.



Soggiorno, vista  
dall'alto.  
Quadro: Marcello  
Furber, Remontari, olio e  
acrilico su tela.



Sala da pranzo, vista  
dall'alto



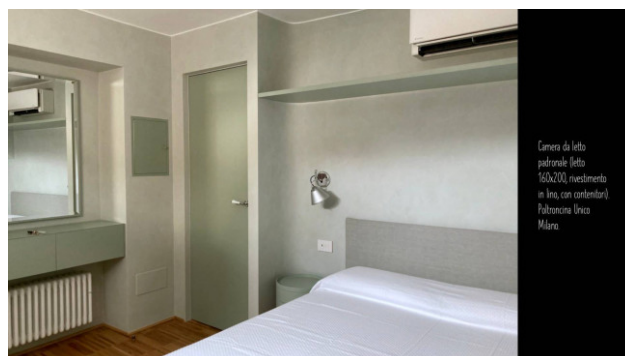
Vista del soffitto dal  
soffitto.



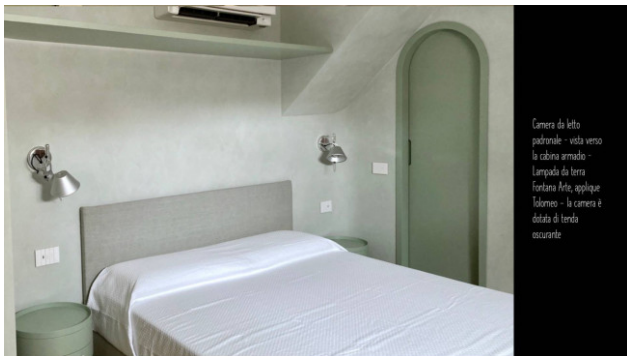
Cucina Valucine con  
piano in ceramica,  
fornelli a induzione,  
cappa al pane cottura,  
lavastoviglie, frigorifero  
e congelatore, ampio  
armadio-dispensia.  
Lampada Fontana Arte,  
sedie Drade.



La cucina ha un doppio  
accesso: dall'ingresso e  
dall'area pranzo.  
Dalla cucina si accede  
anche al locale-  
lavanderia (lavandino,  
caldia, lussuogatrice)



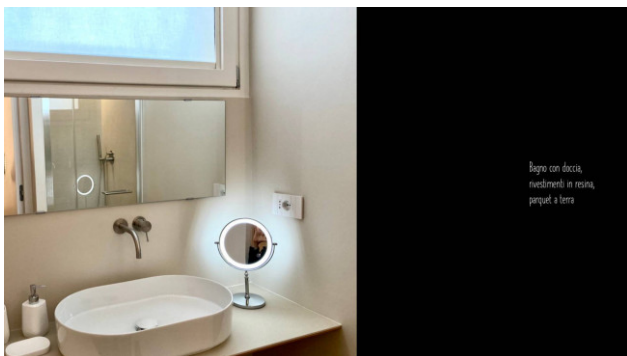
Camera da letto  
padronale (letto  
160x200, rivestimento  
in lino, con contenitori).  
Poltroncina Unico  
Milano.



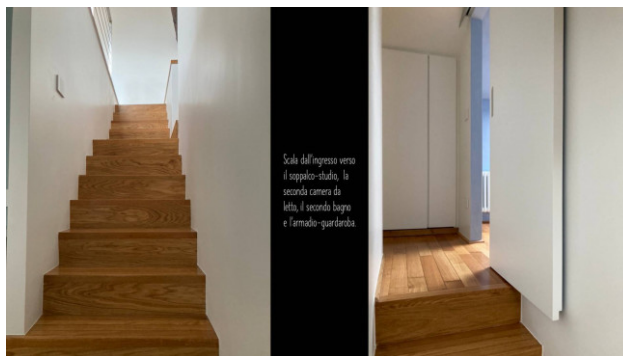
Camera da letto padronale - vista verso la cabina armadio - Lampada da terra Fontana Arte, applique Tolomeo - la camera è dotata di tenda oscurante



Cabina-armadio con cassetti, appendere, vassoio per scarpe



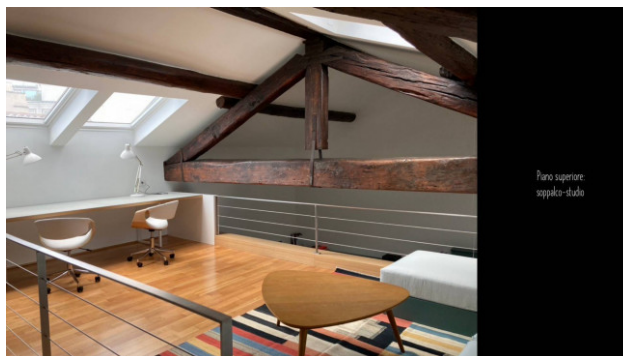
Bagno con doccia, rivestimenti in resina, parquet a terra



Scale dall'ingresso verso il soppalco-studio, la seconda camera da letto, il secondo bagno e l'armadio-guardaroba



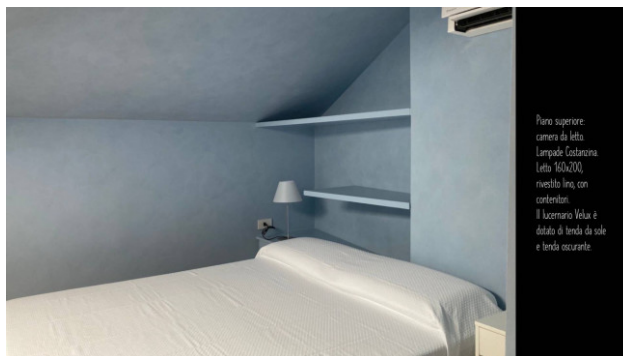
Piano superiore: soppalco-studio, area scrivania Lampade Naska-Lars, sedie ginevini Bozzetto I bracci lucernari dello studio sono comandati elettronicamente e dotati sia di copertura oscurante, sia di tende da sole. La connessione internet è già predisposta



Piano superiore: soppalco-studio



Piano superiore: soppalco-studio, area relax. Tappeto Kilm Afghan Modern Lampada da lettura applicata a parete Quads: Chiara Pasquelli



Piano superiore: camera da letto Lampade Lucernario Letta 160X200, rivestito lino, con contenitori. Il lucernario Velux è dotato di tenda da sole e tenda oscurante



Piano superiore:  
camera da letto  
Lampade Costarossa  
Letto 160x200,  
rivestito lino, con  
contenitori.  
Il Lucernario Valin è  
dotato di tende da sole  
e tenda oscurante.



Piano superiore: bagno  
con doccia, rivestimenti  
in resina, parquet a  
terra.  
Nel corridoio di accesso  
dalla camera al bagno è  
disponibile un'ampia  
armadiatura.



Via Santa Maria  
Fukorina è nel centro  
medievale di Milano.  
A 160 metri da Piazza  
Affari, a 7 minuti a  
piedi da Piazza Duomo,  
a 6 minuti a piedi da  
MM Costucco, a 7  
minuti da MM Cavallotti.  
È a 2 minuti da garage  
di piazza Borromeo.

**Reliance Group**

Via Giovanni Boccaccio N° 37 - Milano (MI) - Phone number (+39) 02 312179  
reliance@cbitaly.it - <https://www.coldwellbankerluxury.it/en>  
VAT 04954530962