



Farmhouse for Sale in Greve in Chianti Lamole

€ 1.050.000

Ref. CBI162-2909-377



240 sq.m | Bathrooms: 2 | Bedrooms: 3 | Rooms: 10

Country Home with Barn in Lamole | Heart of Chianti Classico - Tuscany

In a dominant position amidst the rolling hills of Chianti, near Lamole and just 7 km from Greve in Chianti, this charming Tuscan estate offers breathtaking views and absolute tranquility-midway between Florence and Siena, in the heart of the UNESCO-listed Chianti landscape.

The property includes a 150 sqm traditional farmhouse and a 90 sqm independent barn, both tastefully restored to preserve the authentic Tuscan character. Features include original fireplaces, exposed beams, terracotta floors, and antique furnishings in arte povera style.

The farmhouse is laid out over two floors: the ground level offers a kitchen with historic hearth, dining room, living room, and bathroom; upstairs are four bedrooms (one used as a sitting room) and two bathrooms.

The barn, currently a studio, includes two spacious rooms upstairs and a laundry/storage area on the ground floor-easily convertible into a guest house or private spa.

Outdoors, a panoramic 1,000 sqm garden serves as a natural terrace with a paved area for dining and a traditional wood oven.

The estate also includes 3 hectares of land: 1 ha of Chianti Classico vineyard (Sangiovese), 1 ha of olive grove with 240 trees, and 1 ha of woodland, ensuring privacy and contact with nature.

Bonus: The house once belonged to a prominent figure in Italian literature, adding a unique cultural charm.

Key Features



- Farmhouse: 150 sqm
- Barn: 90 sqm
- Garden: 1,000 sqm
- Land: 3 ha (vineyard, olive grove, woodland)
- Independent heating, fireplace, outdoor parking
- Fully renovated - Year built: 1800

Distances

- Lamole: few minutes - Greve in Chianti: 7 km
- Florence center: 30 km - Florence Airport: 35 km
- Hospital (Ponte a Niccheri): 28 km
- Nearest town: < 5 km

Certification

Energy Class: G

Property Informations

Zip Code: 50022

Bedrooms: 3

Bathrooms: 2

Rooms: 10

Internal condition: Restored

---> data_operazione <---: 0000-00-00

---> esclusiva <---: 1

: 0000-00-00

Floor: Ground Floor

Total floors: 2

Date of construction: 1800

Current Status: Available after the deed of sale

Garden: Private, 1,000 sq.m

Kitchen: Eat-in kitchen



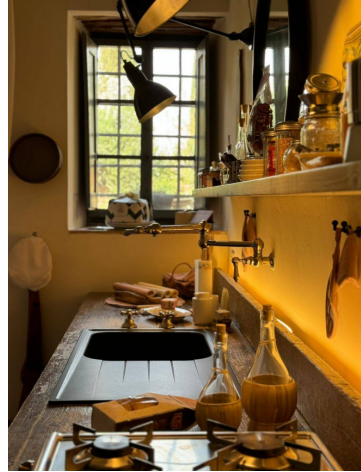
24RE

Via della Vigna Nuova, 16 - Firenze (FI) - Phone number +393496007599
24refirenze@cbitaly.it - <https://www.coldwellbankerluxury.it/en>
VAT 04954530962



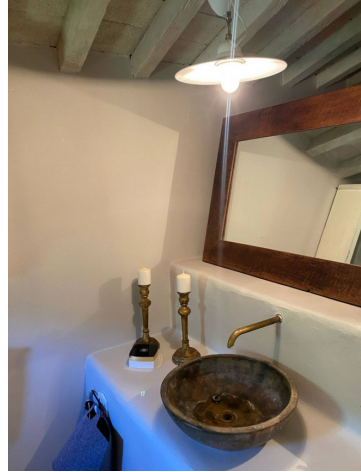
24RE

Via della Vigna Nuova, 16 - Firenze (FI) - Phone number +393496007599
24refirenze@cbitaly.it - <https://www.coldwellbankerluxury.it/en>
VAT 04954530962



24RE

Via della Vigna Nuova, 16 - Firenze (FI) - Phone number +393496007599
24refirenze@cbitaly.it - <https://www.coldwellbankerluxury.it/en>
VAT 04954530962



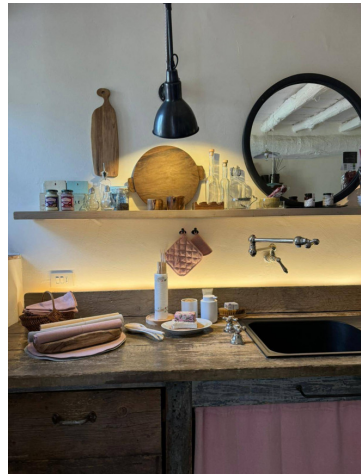
24RE

Via della Vigna Nuova, 16 - Firenze (FI) - Phone number +393496007599
24refirenze@cbitaly.it - <https://www.coldwellbankerluxury.it/en>
VAT 04954530962



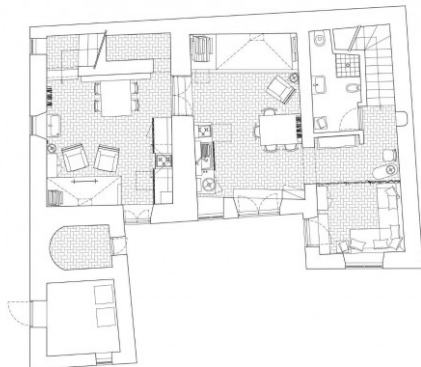
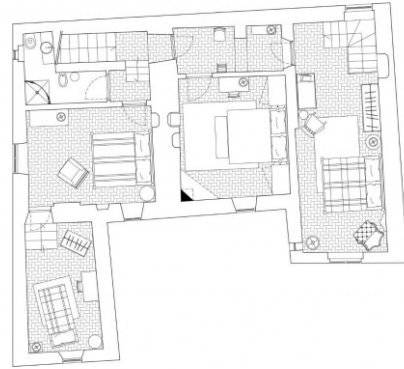
24RE

Via della Vigna Nuova, 16 - Firenze (FI) - Phone number +393496007599
24refirenze@cbitaly.it - <https://www.coldwellbankerluxury.it/en>
VAT 04954530962



24RE

Via della Vigna Nuova, 16 - Firenze (FI) - Phone number +393496007599
24refirenze@cbitaly.it - <https://www.coldwellbankerluxury.it/en>
VAT 04954530962



24RE

Via della Vigna Nuova, 16 - Firenze (FI) - Phone number +393496007599
24refirenze@cbitaly.it - <https://www.coldwellbankerluxury.it/en>
VAT 04954530962