



Boutique Hotel for Sale in Lecce

Centro storico

€ 2.700.000

Ref. CBI069-860-132696



2.000 sq.m | Bathrooms: 6 | Bedrooms: 20 | Rooms: 30

LECCE - HISTORICAL CENTER

In the immediate vicinity of the Cathedral of Lecce, we offer for sale an entire period building of approximately 2000 square meters in total distributed over two floors and consisting of two large apartments, entrance hall, garden, tavern and cellars.

The property is located on the corner side of one of the main streets of the historical centre, with access from an imposing door that opens onto a courtyard, partly covered, connected to the large cellar. The cellar, with high star vaults, connects to the rear garden connected in turn, with the upper floor, via an open staircase.

From the covered entrance hall, two large parallel staircases lead to the two upper floors which, together with the garden stairs, provide different access points to the property, making it easily divisible into independent units. An additional access point is the elevator on the ground floor that reaches each floor.

The building fully preserves the typical Salento vaults that alternate in the various rooms between star, barrel, cross and pavilion vaults, enhancing the enchanting mosaic of the flooring alternating with Sicilian marble.

The large windows placed around the entire perimeter of the building capture the warm light and offer a beautiful view of one of the most characteristic corners of the city.

The property is in good structural condition thanks to the maintenance work received over the years and, both for its strategic position and its large size, it is suitable to be used as a high-level tourist accommodation.

Lecce is 12 km from the nearest beaches on the Adriatic coast, 40 km from Otranto, 28 km from Gallipoli on the Ionian coast and 45 km



from Brindisi Airport.

Certification

Energy Class: G

Property Informations

Address: Piazza Duomo

Zip Code: 73100

Livable surface: 1800.00

Bedrooms: 20

Bathrooms: 6

Rooms: 30

Internal condition: Discreet

---> data_operazione <---: 0000-00-00

---> esclusiva <---: 1

: 0000-00-00

Floor: On two levels

Total floors: 2

Lift: Yes

No architectural barriers: Yes

Date of construction: 1800

Current Status: Available after the deed of sale

Balconies: Present

Terrace: Present

Garden: Private

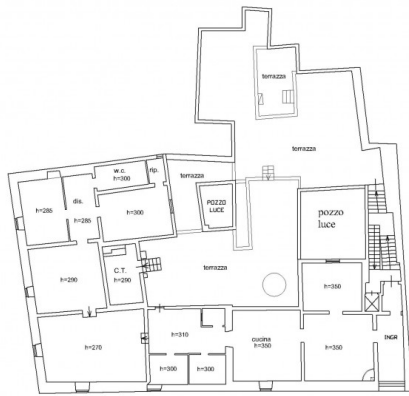
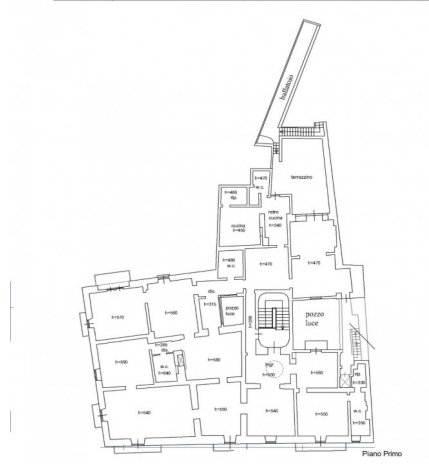
Sea distance: 12.000 meter

Kitchen: Eat-in kitchen



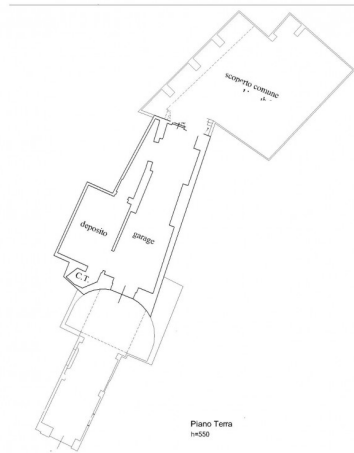






www.coldwellbanker.it/real

Piano Secondo



Piano Terra
n=550

Gruppo Bodini

Via 95 Reggimento Fanteria, 11 - Lecce (LE) - Phone number (+39) 0832 099369
 lecce@cbitaly.it - <https://www.coldwellbankerluxury.it/en>
 VAT 04954530962