



COLDWELL BANKER

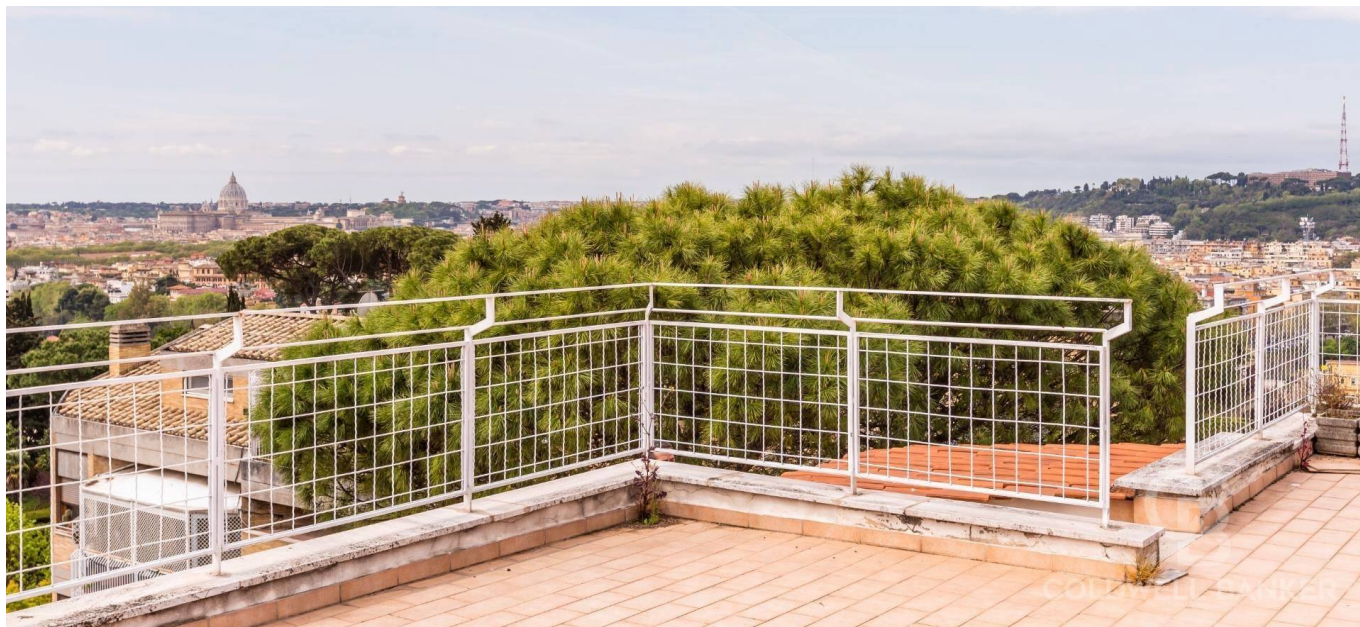
BARBERA GROUP
INTERNATIONAL REAL ESTATE

Barbera Group International Real Estate
Via Panama, 22 - 00198 Roma
Phone number (+39) 06 8411681

Penthouse for Sale in Roma

€ 5.500.000

Ref. CBI100-551-290188



600 sq.m | Bathrooms: 5 | Bedrooms: 5 | Rooms: 20

PANORAMIC PENTHOUSE AND SUPERATTICO - MONTI PARIOLI -

In the heart of the Monti Parioli district and precisely in Via Sebastiano Conca, a quiet street adjacent to Villa Balestra, we offer for sale a splendid penthouse and super-attic with large panoramic terraces over the whole of Rome.

The apartment, of great charm and high representation, is served by double entrances and is spread over two levels for a covered area of about 600 square meters as well as 350 square meters of terraces with a breathtaking view.

On the fifth floor, we find the first entrance, directly from the lift, which leads to the triple living room with adjoining dining room characterized by high ceilings and large and bright windows, terrace, kitchen, bedroom and bathroom.

An elegant internal staircase leads to the sixth floor where we find an airy and bright living room, 4 bedrooms with respective bathrooms.

Both floors are surrounded by terraces, and an external staircase leads to the roof of the property with an unforgettable 360-degree view over the whole of Rome.

The property is in excellent condition.

Concierge service all day, cellar and 4 covered parking spaces.

Cadastral category A2.

Barbera Group International Real Estate

Via Panama, 22 - Roma (RM) - Phone number (+39) 06 8411681
infobarberagroup@cbitaly.it - <https://www.coldwellbankerluxury.it/en>
VAT 04954530962

Property Informations

Address: Via Sebastiano Conca, 11

Zip Code: 197

Bedrooms: 5

Bathrooms: 5

Rooms: 20

Internal condition: Excellent

```
---> data_operazione <---: 0000-00-00
```

---> esclusiva <---: 1

: 0000-00-00

Floor: Attic

Total floors: 6

Lift: Yes

Date of construction: 1970

Current Status: Free at the deed

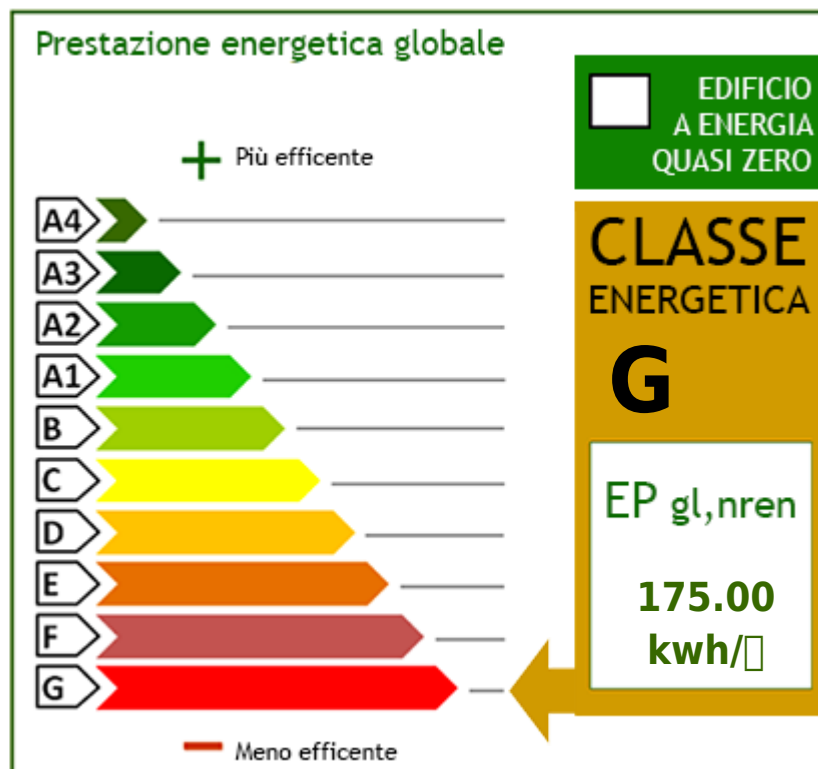
Condominium costs: € 300

Balconies: Present

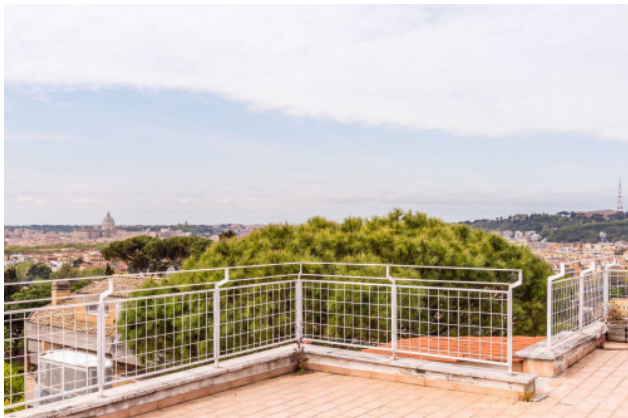
Terrace: Present, 300 sq.m

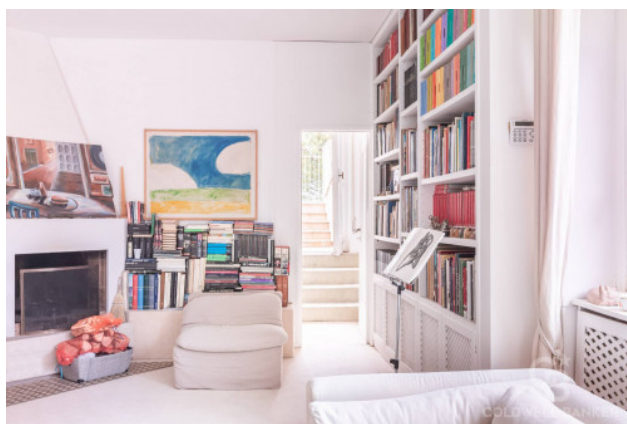
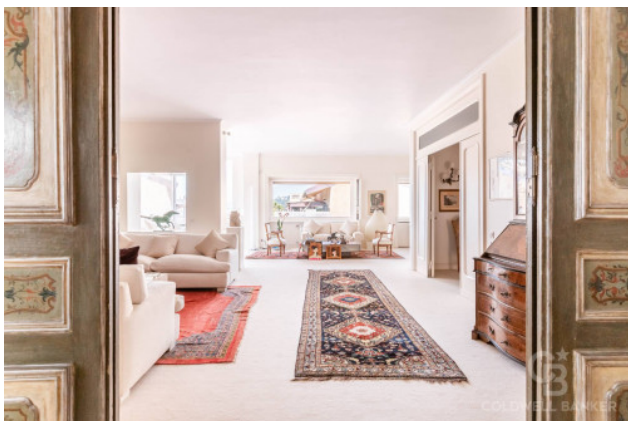
Kitchen: Regular Kitchen

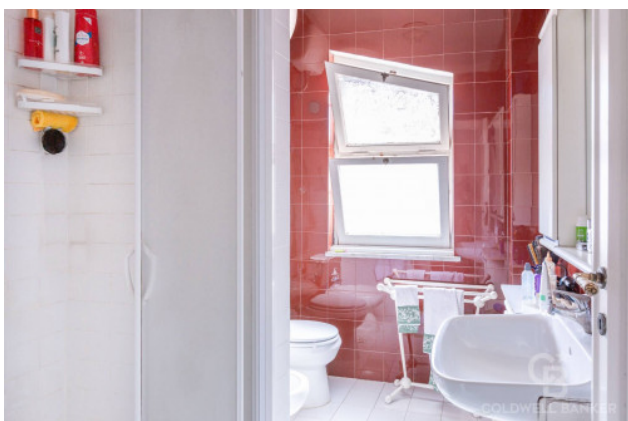
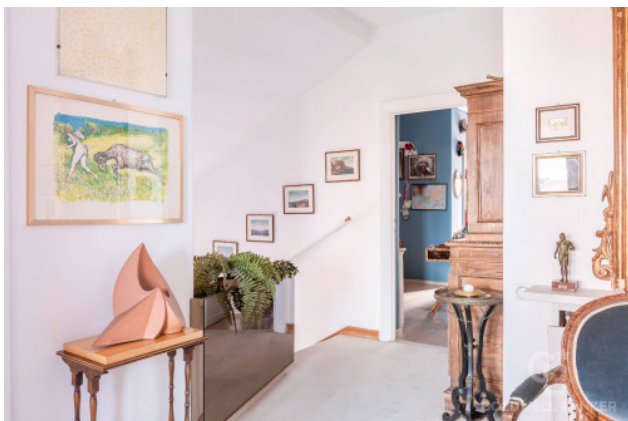
Garage: Quadruple

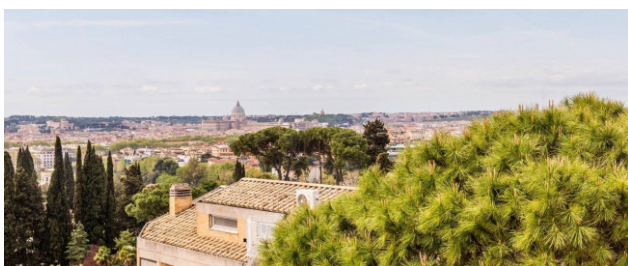










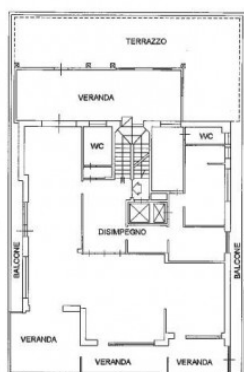


PIANO OTTAVO

LOCALE CANTINA



PIANO 1 SOTTOSTRADA h=2.50



PIANO SESTO h=3.10



PIANO SETTIMO h=2.80